

Insite Pacific introduces the **Mini Zeus Mark II**, a High Definition CMOS color zoom video camera. The camera has 2,380,000 effective pixels that can shoot high-definition images with superior picture quality. The images are clear, detailed, and true to life accurate. High Definition Television (HDTV) provides nearly five times more video information (2,380,000 pixels compared to roughly 410,000 pixels) compared to standard definition TV systems.

The camera can be provided in a housing rated from 1,000 meters to 7,500 meters depth.

A glass hemispherical viewport and Insite Pacific's exclusive fully underwater corrected optical lens system corrects for chromatic and geometric distortion, astigmatism, as well as other optical abnormalities. Our proven corrected optical lens system also eliminates zoom and focus tracking errors.

The Mini Zeus Mark II has HD-SDI and 3G-SDI High Definition digital video outputs of 1080p/59.94, 1080p/50, 1080p/29.97, 1080p/25, 1080i/59.94, 1080i/50, 720p/59.94, 720p/50, 720p/29.97, and 720p/25 available from a single camera. The Standard Definition analog video outputs of NTSC & PAL and analog HD Component video outputs are also available. Focus, iris, and zoom can be controlled via DC voltages, a GUI, or Insite Pacific's Camera/Lens Controller for maximum flexibility.

Optionally a CWDM compatible 2.970 Gbit/s 3G-SDI electrical to fiber optic video converter mounted inside the pressure housing, along with a fiber optic connector mounted on the rear endbell, can provide transmission of the video signal for distances of up to 30Km on a fiber optic cable.

Insite Pacific's optional Camera/Lens Controller allows control of zoom, focus (auto/manual & near/far) and iris (auto/manual & open/close). The zoom is controlled by using a single axis rate control joystick, the focus by using a slide potentiometer for precise positional control, and the iris by using a rotary potentiometer. The various video outputs of the camera and white balance are selectable via the Control Unit. Communication between the hand control unit and the camera is selectable for either RS232 or RS485 comm's. Positional feedback from the camera for lens focus, iris, and zoom settings are available outputs of the control unit.



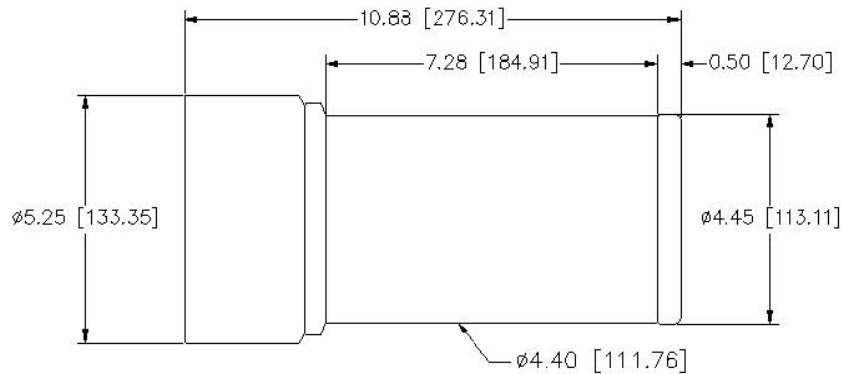
Features

- ❑ 1080p / 1080i High Definition Video
- ❑ Super Wide 141 Degree Diagonal Angle of View
- ❑ 1,000 Meter to 7,500 Meter Depth Ratings
- ❑ HD: HD-SDI & 3G-SDI Digital Video Outputs
- ❑ SD: NTSC & PAL Analog Video Outputs
- ❑ Optional Fiber Optic HD-SDI & 3G-SDI Outputs
- ❑ Close Focus to Front of the Dome at Zoom Full Wide
- ❑ Close Focus of 8" (203mm) from the front of the Dome at Zoom Full Tele
- ❑ Glass Hemispherical Viewport with Insite Pacific's Exclusive Fully Corrected Optics

Applications

- ❑ Offshore Oil & Gas Industries
- ❑ Underwater Documentaries
- ❑ High Resolution Inspection In Restricted Access Areas
- ❑ Marine Archaeology
- ❑ Oceanographic Research
- ❑ Military

Insite Pacific - Mini Zeus Mark II



Specifications:

All dimensions in inches [millimeters]

Electrical

Sensor: 1/2.8-inch Exmor CMOS
Sensitivity: 0.35 lux (1/30 second shutter speed)
HD-SDI & 3G-SDI HD Digital Video Formats: 1080p/59.94, 1080p/50, 1080p/29.97, 1080p/25, 1080i/59.94, 1080i/50, 720p/59.94, 720p/50, 720p/29.97, 720p/25
HD Analog Video Output: HD Component Video
SD Analog Video Outputs: NTSC & PAL (Composite)
Signal to Noise Ratio: 50dB
Focus / Zoom / Iris: Remote control
Focus Range (At full telephoto): 8" (203mm) to infinity
Focus Range (At full wide): Front of the dome to infinity
Camera Power: 15-30 Vdc, 300 mA nominal
Iris Range: F1.8 to Closed
Lens: 3.8 to 38mm, 10X Zoom lens

Angle of view	3.8mm	38mm
In water	(Wide angle)	(Telephoto)
Diagonal	141.6°	14.7°
Horizontal	136.5°	12.8°
Vertical	109.3°	7.2°

Environmental

Depth: 1,000 to 7,000 meter pressure housings available
Operating Temperature: -5°C (23°F) to 60°C (140°F)
Storage Temperature: -20°C (-4°F) to 60°C (140°F)

Mechanical

Dimensions above are for the 6km 3G-SDI electrical Camera

Weight In Air: 15.5 lbs. (7.03 kg)
Weight In Water: 9.0 lbs. (4.08 kg)
Housing Material: 6AL / 4V Titanium
Viewport: Hemispherical Glass
 (Optically Polished, Water Corrected)
Connector: Customer specified



CAMERA CONTROL UNIT

All specifications are subject to change in line with Insite Pacific's policy of continual product development.

INSITE PACIFIC Inc.

742 GENEVIEVE STREET, SUITE T, SOLANA BEACH, CA 92075-2060, USA

Phone (858) 523-0642 Fax (858) 523-0643

Website: www.insitepacific.com Email: sales@insitepacific.com

Issue August 8, 2014